

Why Aquavx?

Aquavx is unique. Unlike traditional SCADA systems, Aquavx is highly configurable without the need for expensive customization... and it's wireless. Aquavx gives you a complete Internet-based solution for remote monitoring and control of your assets, and you also get a local user-interface at all of your sites. The monthly fee for the service is less than a traditional phone line and the overall cost is under \$2000 per unit. There is no other solution that delivers so much value at such a low cost.

Whether you need to monitor a single piece of equipment or many, Aquavx gives you a complete turnkey monitoring and control solution. Status of assets may be viewed locally at the site or remotely via the Internet. An extensive web-based solution provides a complete view of your assets' status on a single map and in a tabular format, with a quick view of any critical alarms. You can retrieve additional site information by drilling down into sub-menus on a per-site basis. This extensive site information assists in managing your assets and provides you with the ability to prioritize your tasks, by site, in order to reduce unnecessary site visits — resulting in an overall cost savings.

Aquavx offers a complete service, which includes a service level agreement, one year of online data access and two additional years of data available upon request, 24/7 technical support and a 2-year warranty on the hardware. Why do we offer these assurances? We are committed to satisfying our customers because we want to be your monitoring partner, not just another vendor. Aquavx is a different kind of solution from a different kind of company.

Features & Benefits

You'll find that Aquavx has the features you need and that you're in control without relying on a 3rd party. Here's what you can expect:

Web Interface: A quick view is provided to display any critical events or alarms at any given site. Critical events are highlighted in red on all web pages and additional information is available by drilling down into sub-menus on a per-site basis.

Cellular and Satellite Communications: Cost-effective communications, without expensive network build-outs, even where cell phones won't work.

Intelligent Hardware: Alarm thresholds are pushed down to the hardware and are easily configurable, giving you all of the information you need and none of the data you don't.



Local Hardware Interface: Control panel allows you to view channel status, events, and history and make configuration changes locally at the site.

Event Notification: Provides flexibility in the communication of event-based alerts. Provides notifications of alerts via voice, email or text messages...choose what is most convenient.

User-Driven Reports: Get the reports you need when you want them. Run times, totalized flow, number of cycles, etc. can all be included in reports that can be run either on a set schedule or on demand.

Secure Access: Aquavx's robust user administration module provides various levels of security that are configurable by the user. This allows users to easily configure user access, and groups to receive alerts and determine how alerts are received. Even the hardware has local secured access.

System Mapping: Get an overview of all of your assets on a single map powered by Bing™.

Service Level Agreement: Aquavx service is backed by an uptime guarantee delivered in writing with every subscription we sell.

Water & Wastewater Applications

Aquavx is a leader in the water and wastewater markets. Our products have been utilized for over 20 years in more than 40,000 installations within the municipal and industrial water and wastewater markets, providing monitoring and alarm notification at remote and unmanned facilities.

Operations personnel are continually challenged to prevent overflows, reduce pump cycling, prolong the life of pumps, limit and report access - all as efficiently as possible. Antx's DiaLog products, which power the Aquavx solution, have been serving the needs of water and wastewater markets since 1983.

Whether you need to monitor just a few critical conditions or hundreds, Aquavx is the answer. Below are some of the more common applications that Aquavx benefits:

- Lift stations**
- Small and large sanitation plants**
- Water tanks**
- Wells**
- Distribution**
- Small and large water plants**

PHYSICAL CHARACTERISTICS

Enclosure: NEMA 4X hinged enclosure: 12"W x 10"H x 6"D, weight 3.8 lbs.

Input/Output Capabilities:

- 10 digital inputs
- 4 analog inputs (0-20mA, 4-20ma, or 0-5VDC, or 1-5VDC)
- 2 digital relay outputs
- 30 Modbus analog inputs
- 20 Modbus digital inputs
- 8 Modbus digital outputs
- On board discrete termination for analog and digital are screw-down 14-22 AWG

User Interface: 2x20 line LCD backlight display, 20 key keypad

Serial Ports: 1 RS232 or 1 RS485, RS232, Molex crimp/poke connection 22-26 AWG (connection kit available), Modbus RTU Slave/Master or local programming RS485, Screw-down 14-22 AWG, Multidaisy chain RTU capable

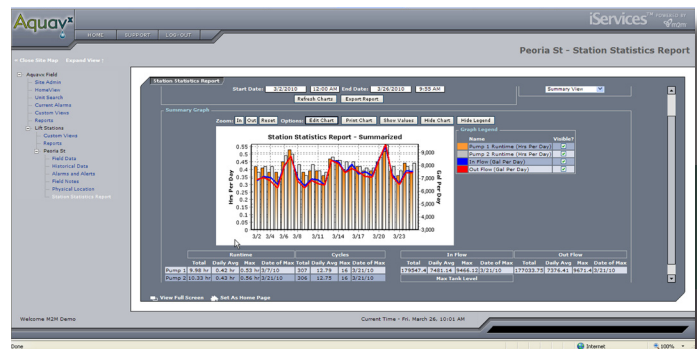
Cellular: GSM modem, ATT, T-mobile, Quad-band, FCC, PTCRB and UL certified, CDMA modem, Verizon, Sprint, Dual-band, FCC and UL certified

Antenna: Antenna included with both modems; external Omni directional 3dB Adhesive backed with 10 foot cable, External Yagi antenna available, Surge suppression kit available

Operating temperature: -20 °F to 158 °F (-28 to 70°C).

Operating humidity: 0% to 90% @ 140°F.

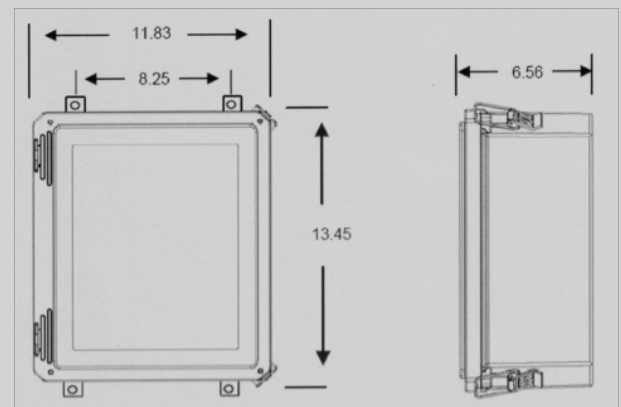
Power: Input is 9-17.5Vdc or 110Vac, 12Vdc 5W battery 20hr back up, Surge protection on power and inputs, Power input is direct to unit operation. Battery backup (12Vdc) is available in the event of primary power loss.



Our commitment to you...

We are confident that you will be satisfied with Aquavx. If not satisfied, you may return it within a 30 day period at no cost to you.

Aquavx Scout



* Panel mount version available with smaller dimensions excluding the NEMA4 enclosure. Dimensions available upon request.